



FENDT

CARAVAN

APERIO • BIANCO • TENDENZA • DIAMANT

2025

DON FC 2025
www.fendt-caravan.com

www.fendt-caravan.com

FENDT

CARAVAN

QUALITY IS NO COINCIDENCE

CONTENTS

- 04 **APERO**
Experience a trendy lifestyle
- 16 **BIANCO**
A wide selection to feel great in
- 30 **TENDENZA**
Modern trendsetter on the go
- 42 **DIAMANT**
Unique in every way
- 54 The exterior design
- 58 Standard equipment of outdoor area
- 60 Overview of beds
- 62 Master Quality
- 72 Dimensions and weights of all series
- 75 Explanation of symbols



Comfortable and optimally equipped on the road,
Fendt caravans feel at home anywhere.

APER0

Experience a trendy lifestyle



APERRO



APERRO

Experience a trendy lifestyle



465 SFB / Ibiza



515 SG / Pino

08

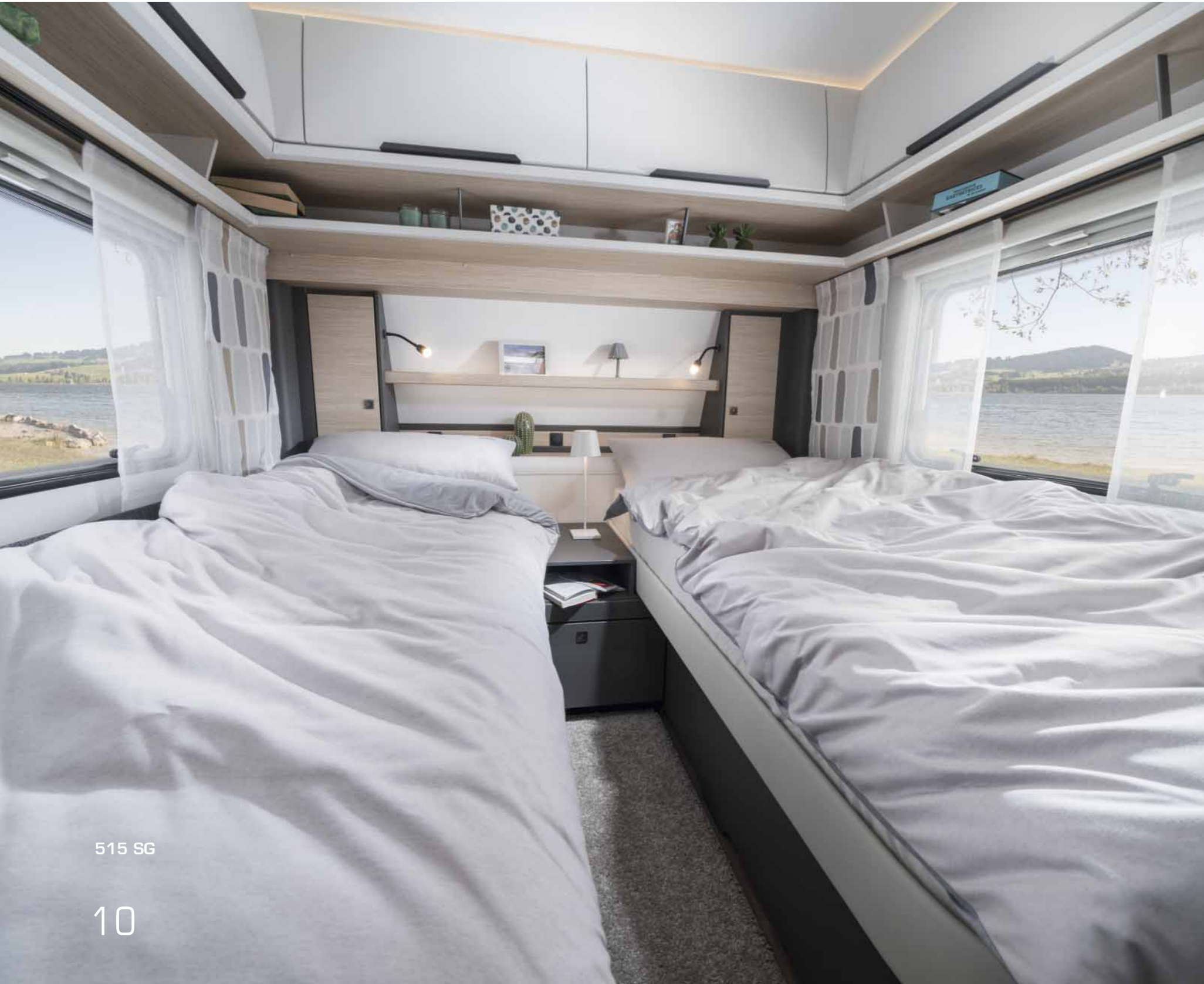


465 SFB / Ibiza

09

APERRO

Experience a trendy lifestyle



515 SG

10



465 SFB



465 SFB

11

The Apero standard equipment

Living room/sleeping area

- Furniture in "Norfolk decor"
- "Ibiza" or "Pino" upholstery variants
- LED lighting
- Ceiling lamp (LED/12 V) with 1 circuit
- Folding sliding door
- Clothes rack in the sleeping area*
- Lifting table with locking lever in the round suite of seats*
- Indirect lighting (LED)
- Slatted frames with fully flexible and permanently elastic bridged joints and hardness adjustment (single and double beds)
- Reading spotlights (12 V) in the round seating suite*
- Reading spotlights (12 V) in the sleeping area
- Lift-O-Mat (single and double beds)
- Mattresses: interior-sprung (single and double beds)
- MINI/MIDI roof hood (Dometic) with crank, forced ventilation, integrated blackout pleated blind and roller fly screen
- Ergonomically shaped back padding
- High-density seat upholstery
- Ventilated storage compartments with indirect ceiling lighting (LED)
- Carpet in the door sill with the Fendt-Caravan logo
- Vinyl flooring, hard-wearing, easy to care for
- Winter backrests

Kitchen/bathroom

- Waste collector integrated into the entrance door
- Workplace lighting (LED)
- Bathroom lighting (LED/12 V)
- Cutlery inserts with a soft-touch surface
- Shower cubicle*
- Towel/clothes hooks and toilet paper holder*
- Cooker (3-burner) with ignition fuse, automatic ignition, matt-enamelled cooking grate, glass cover, and separate stainless steel sink with glass cover
- Comfort pleated roller blind on the kitchen window
- Kitchens with large drawers*
- Absorption refrigerator (98 l when freezer compartment is removed) that can be opened from both sides, with interior lighting*
- Absorption refrigerator (133 l when freezer compartment is removed), slim tower, that can be opened from both sides, with interior lighting*
- Kitchen mixer tap made of plastic
- Central washrooms* with large wall units, generous shelves under the sink and an illuminated mirror
- Mirror cabinet in the open bathroom*
- Flush toilet with diode level indicator and holding tank (rollable)*
- Kitchen storage compartments with soft-close hinges
- Washbasin in white with shelves, bathroom cabinet and illuminated mirror
- Washroom window, hinged, made of frosted glass with blackout roller blind and roller fly screen

Water

- Mobile waste water tank (24 L)
- Fresh water (fixed tank 10^d/25^e litres) with external filling*
- Fresh water (fixed tank 10^d/45^e litres) with external filling*
- Fresh water level indicator
- Truma-Therme 230 V water heating with mixer tap

Multimedia

- TV cabling (230 V socket)

Technology / heating / air conditioning

- Truma S 3004 and S 5004 gas heaters with automatic ignition*
- Smoke detector
- Switch on the entrance door for the ceiling light and awning light
- Switching power supply 350 W
- Fuse box (230 V) with residual current device (safety switch)
- Spotlight(s) (LED/12 V)
- 230 V sockets
- USB-C double socket(s)
- Warm air system with fan (1 x 12 V)*
- Warm air system with fan (2 x 12 V)*

* certain models only

For an explanation of the symbols, see page 75

APERERO

Experience a trendy lifestyle



465 SFB



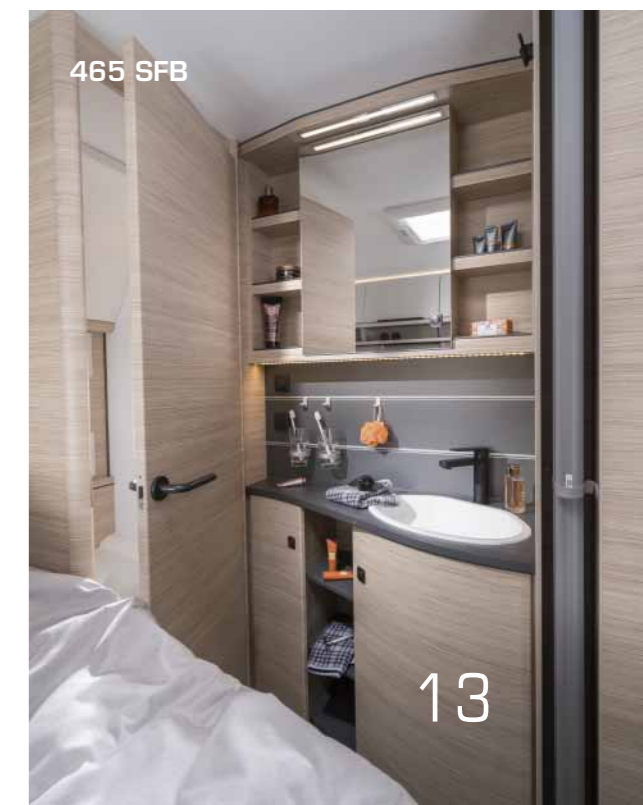
515 SG



515 SG



465 SFB



465 SFB



465 SFB	
Total length cm	703
Total width cm	232
Sleeping spaces	4
Technically permitted total mass kg	1500 ^{g)}
Mass in running order kg ^{c)}	1271



465 TG	
Total length cm	703
Total width cm	232
Sleeping spaces	4
Technically permitted total mass kg	1500 ^{g)}
Mass in running order kg ^{c)}	1280



495 SFB	
Total length cm	722
Total width cm	232
Sleeping spaces	4
Technically permitted total mass kg	1600 / 1700 ^{h) g)}
Mass in running order kg ^{c)}	1354



495 SG	
Total length cm	722
Total width cm	232
Sleeping spaces	4
Technically permitted total mass kg	1600 / 1700 ^{h) g)}
Mass in running order kg ^{c)}	1353



495 SKM	
Total length cm	722
Total width cm	232
Sleeping spaces	5
Technically permitted total mass kg	1600 / 1700 ^{h) g)}
Mass in running order kg ^{c)}	1366



515 SG	
Total length cm	751
Total width cm	232
Sleeping spaces	4
Technically permitted total mass kg	1600 / 1700 ^{h) g)}
Mass in running order kg ^{c)}	1395



560 SKM	
Total length cm	772
Total width cm	250
Sleeping spaces	5
Technically permitted total mass kg	1700 ^{g)}
Mass in running order kg ^{c)}	1479



Scan QR code
to watch a film about the Apero

Dimensions and weights of all model ranges and models from page 72
Explanation of the symbols on page 75

BIANCO

A wide selection to feel great in



BIANCO





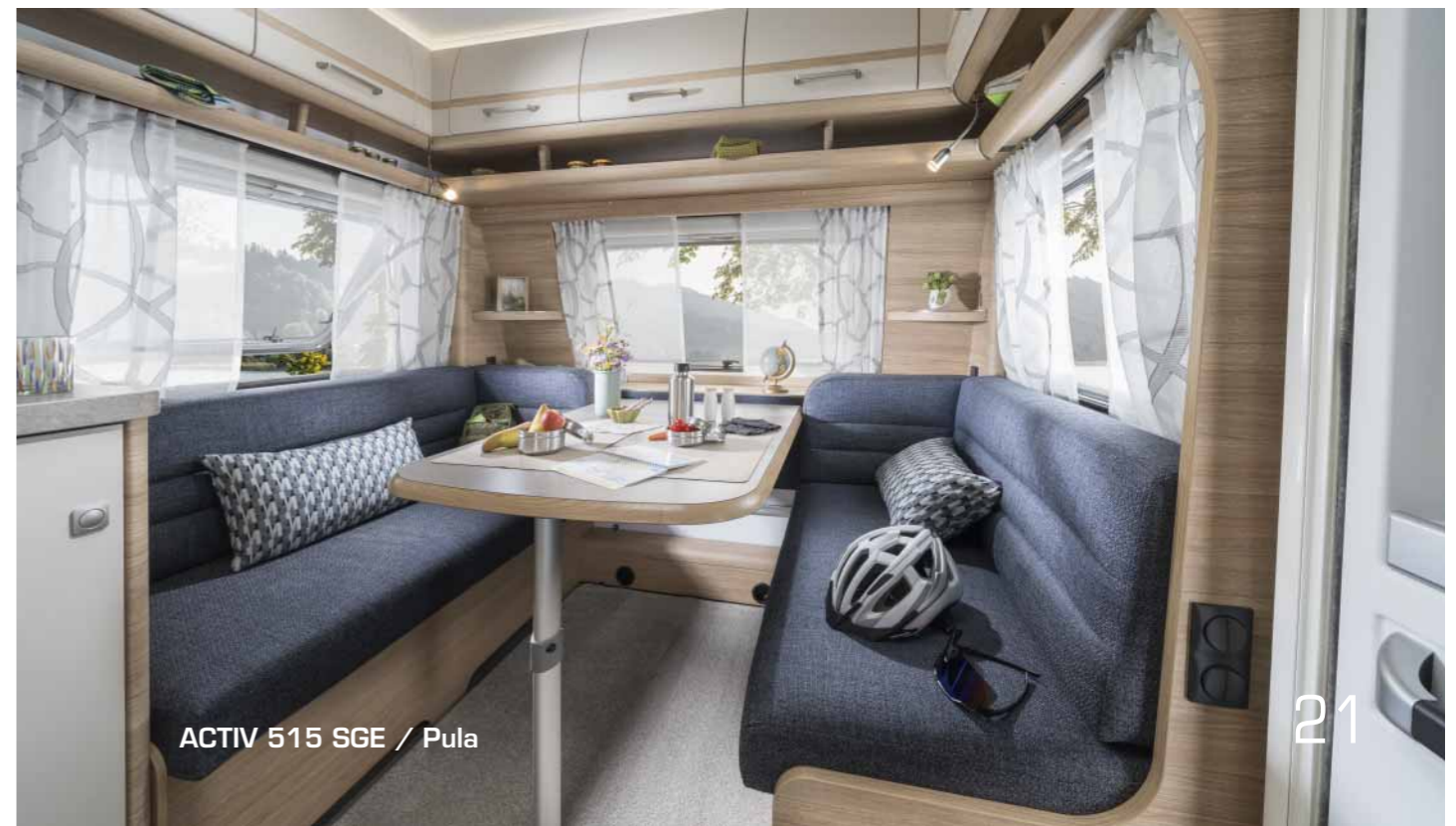
ACTIV 550 SKM / Almeria

BIANCO

A wide selection to feel great in



ACTIV 550 SKM / Almeria



ACTIV 515 SGE / Pula

BIANCO

A wide selection to feel great in



ACTIV 515 SGE



ACTIV 550 SKM



ACTIV 550 SKM

The Bianco standard equipment

Living room/sleeping area

- Furniture in "Tiberino decor"
- "Almeria" or "Pula" upholstery variants
- LED lighting
- Ceiling lamp (LED/12 V) with 2 circuits
- Folding sliding door*
- Clothes rack in the sleeping area*
- Lifting table with locking lever in the round suite of seats*
- Indirect lighting (LED)
- Slatted bed base with fully flexible and permanently elastic bridged joints and hardness adjustment (single and double beds)
- Reading spotlights (12 V) in the round seating suite*
- Reading spotlights (12 V) in the sleeping area
- Lift-O-Mat (single and double beds)**
- Mattresses: interior-sprung (single and double beds)**
- MINI/MIDI roof hood (Dometic) with crank, forced ventilation, integrated blackout pleated blind and roller fly screen *
- Ergonomically shaped back padding
- High-density seat upholstery
- Ventilated storage compartments with indirect ceiling lighting (LED)
- Carpet in the door sill with the Fendt-Caravan logo
- Vinyl flooring, hard-wearing, easy to care for
- Winter backrests

Kitchen/bathroom

- Waste collector integrated into the entrance door*
- Workplace lighting (LED)
- Bathroom lighting (LED/12 V)
- Cutlery inserts with a soft-touch surface
- Shower cubicle*
- Towel/clothes hooks and toilet paper holder*
- Cooker (3-burner) with ignition fuse, automatic ignition, matt-enamelled cooking grate, glass cover, and separate stainless steel sink with glass cover
- Comfort pleated roller blind on the kitchen window*
- Kitchens with large drawer*
- Absorption refrigerator (98 l when freezer compartment is removed) that can be opened from both sides, with interior lighting*
- Absorption refrigerator (133 l when freezer compartment is removed), slim tower, that can be opened from both sides, with interior lighting*
- Brass mixer tap
- Central washrooms* with large wall units, generous shelves under the sink and an illuminated mirror
- Mirror cabinet in the open bathroom*
- Stainless steel sink with glass cover
- Flush toilet with diode level indicator and holding tank (rollable)*
- Kitchen storage compartments with soft-close hinges
- Washbasin in white with shelves, bathroom cabinet and illuminated mirror
- Washroom window, hinged, made of frosted glass with blackout roller blind and roller fly screen

Water

- Mobile waste water tank (24 L)
- Fresh water (fixed tank 10^d/25^e litres) with external filling*
- Fresh water (fixed tank 10^d/45^e litres) with external filling*
- Fresh water level indicator
- Truma-Therme 230 V water heating with mixer tap*

Multimedia

- TV cabling (230 V socket)

Technology / heating / air conditioning

- Truma S 3004 or S 5004 gas heaters with automatic ignition (Bianco Selection)*
- Smoke detector
- Switch on the entrance door for the ceiling light and awning light
- Switching power supply 350 W
- Fuse box (230 V) with residual current device (safety switch)
- Spotlight(s) (LED/12 V)
- 230 V sockets
- USB-C double socket(s)
- Warm air system with fan (1 x 12 V) (Bianco Selection)

Additional standard fittings for the BIANCO ACTIV

- Truma Combi 4* or Combi 6* gas heaters with CP plus digital control panel with air circulation and integrated hot water boiler (10-litre capacity)
- Felt stool light gray (Sedus)*
- Lateral loading feature (with separate beds)*
- Increased load capacity due to reinforced chassis

* certain models only ** not Bianco Activ 515 SKF
For an explanation of the symbols, see page 75

BIANCO

A wide selection to feel great in



ACTIV 550 SKM



ACTIV 515 SGE



ACTIV 550 SKM



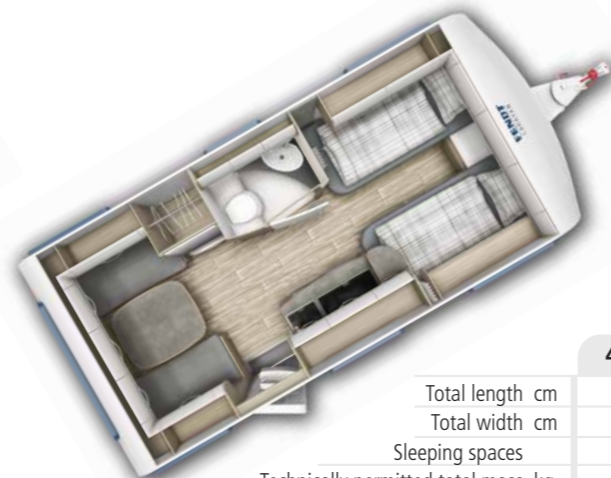
ACTIV 515 SGE

SELECTION



465 SFB

Total length	cm	703
Total width	cm	232
Sleeping spaces		4
Technically permitted total mass	kg	1500 ^{g)}
Mass in running order	kg ^{c)}	1299



465 TG

Total length	cm	703
Total width	cm	232
Sleeping spaces		4
Technically permitted total mass	kg	1500 ^{g)}
Mass in running order	kg ^{c)}	1285



515 SG

Total length	cm	751
Total width	cm	232
Sleeping spaces		4
Technically permitted total mass	kg	1600 / 1700 ^{h) g)}
Mass in running order	kg ^{c)}	1425



515 SKM

Total length	cm	751
Total width	cm	232
Sleeping spaces		5
Technically permitted total mass	kg	1600 / 1700 ^{h) g)}
Mass in running order	kg ^{c)}	1426



550 SKM

Total length	cm	772
Total width	cm	232
Sleeping spaces		5
Technically permitted total mass	kg	1700 ^{g)}
Mass in running order	kg ^{c)}	1440

ACTIV



390 FHS

Total length	cm	603
Total width	cm	232
Sleeping spaces		3
Technically permitted total mass	kg	1500 ^{g)}
Mass in running order	kg ^{c)}	1166



445 SFB

Total length	cm	677
Total width	cm	232
Sleeping spaces		4
Technically permitted total mass	kg	1500 ^{g)}
Mass in running order	kg ^{c)}	1291



465 SFH

Total length	cm	703
Total width	cm	232
Sleeping spaces		3
Technically permitted total mass	kg	1600 / 1700 ^{h) g)}
Mass in running order	kg ^{c)}	1355



465 SGE

Total length	cm	703
Total width	cm	232
Sleeping spaces		2
Technically permitted total mass	kg	1600 / 1700 ^{h) g)}
Mass in running order	kg ^{c)}	1352



Scan QR code
to watch a film about the Bianco

Dimensions and weights of all model ranges and models from page 72
Explanation of the symbols on page 75

ACTIV



New Layout

495 SFE

Total length cm	722
Total width cm	232
Sleeping spaces	4
Technically permitted total mass kg	1700 g)
Mass in running order kg^{c)}	1368



515 SGD

Total length cm	751
Total width cm	232
Sleeping spaces	3
Technically permitted total mass kg	1700 g)
Mass in running order kg^{c)}	1419



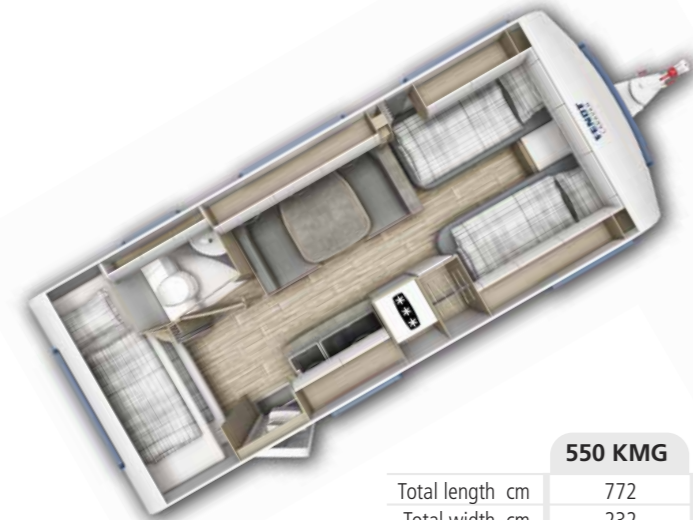
515 SGE

Total length cm	751
Total width cm	232
Sleeping spaces	4
Technically permitted total mass kg	1700 g)
Mass in running order kg^{c)}	1421



515 SKF

Total length cm	751
Total width cm	232
Sleeping spaces	5
Technically permitted total mass kg	1700 g)
Mass in running order kg^{c)}	1453



550 KMG

Total length cm	772
Total width cm	232
Sleeping spaces	5
Technically permitted total mass kg	1700 g)
Mass in running order kg^{c)}	1481



550 SD

Total length cm	772
Total width cm	232
Sleeping spaces	4
Technically permitted total mass kg	1700 g)
Mass in running order kg^{c)}	1452



560 SKM

Total length cm	772
Total width cm	250
Sleeping spaces	5
Technically permitted total mass kg	1700 g)
Mass in running order kg^{c)}	1523

ACTIV



Scan QR code to watch a film about the Bianco

Dimensions and weights of all model ranges and models from page 72
Explanation of the symbols on page 75

TENDENZA

Modern trendsetter on the go



TENDENZA



TENDENZA

Modern trendsetter on the go



550 SG / Cannes



560 SFDW / Studio-Line Valencia

560 SFDW



TENDENZA

Modern trendsetter on the go

560 SFDW



550 SG

The Tendenza standard equipment

Living room/sleeping area

- Furniture in "Noce Marche" decor
- "Cannes" or the "studio line Valencia" as upholstery variants
- Lighting in the wardrobe with motion sensor and charging cable
- LED lighting
- Ceiling lamp (LED/12 V) with 2 circuits, dimmable
- Single-leg lifting table in the round seating suite
- Folding sliding door
- Fly-screen door in the entrance area
- Clothes rack in the sleeping area
- Indirect lighting (LED)
- Slatted bed base with fully flexible and permanently elastic bridged joints and hardness adjustment (single and double beds)*
- Reading spotlights (12 V) in the round seating suite
- Reading spotlights (12 V) in the sleeping area
- Lift-O-Mat (single and double beds)
- Mattresses: comfort foam (7 zones) (single and double beds)
- MIDI roof hood (Dometic) with crank, forced ventilation, integrated blackout pleated blind and roller fly screen
- Ergonomically shaped back padding*
- Lounge-style back padding*
- High-density seat upholstery
- Ventilated storage compartments with indirect ceiling lighting (LED)
- Storage compartments with soft-close hinges
- Carpet in the door sill with the Fendt-Caravan logo
- Carpeted floor, bound at the edge and loosely laid
- Vinyl flooring, hard-wearing, easy to care for
- Winter backrests

Kitchen/bathroom

- Waste collector integrated into the entrance door
- Workplace lighting (LED)
- Oven with grill (gas)**
- Bathroom lighting (LED/12 V)
- Cutlery inserts with a soft-touch surface
- Shower cubicle*
- Towel/clothes hooks and toilet paper holder
- Stove with safety pilot and automatic ignition (3-burner)**
- Stove (3-burner) with safety pilot, automatic ignition, matt, enamelled stove grate, glass cover and separate sink with glass cover*
- Comfort pleated roller blind on the kitchen window
- Kitchens with large drawers
- Kitchen rear wall panelling
- Compressor refrigerator (154 l when freezer compartment is removed), slim tower, that can be opened from both sides, with interior lighting*
- Compressor refrigerator (200 l when freezer compartment is removed), that can be opened from both sides, with interior lighting**

- Brass kitchen mixer tap*
- Central washrooms* with large wall units, generous shelves under the sink and an illuminated mirror
- Mirror cabinet in the open bathroom*
- Stainless steel sink with glass cover*
- Flush toilet with diode level indicator and holding tank (rollable)*
- Kitchen and bathroom storage compartments with soft-close hinges*
- USB-C double socket in the kitchen
- Washbasin with a sanitary acrylic design including shelves, bathroom cabinet and lighted mirror*
- Washbasin in stainless steel** with shelves, bathroom cabinet and illuminated mirror
- Washroom window, hinged, made of frosted glass with blackout roller blind and roller fly screen

Water

- Mobile waste water tank (24 L)
- Fresh water (fixed tank 10^d/25^e) litres with external filling*
- Fresh water (fixed tank 10^d/45^e) litres with external filling*
- Fresh water level indicator

Multimedia

- TV cabling (230 V socket)

Technology / heating / air conditioning

- Truma Combi 4* or Combi 6* gas heaters with CP plus digital control panel with air circulation and integrated hot water boiler (10 l capacity)
- Fendt-CaravanCONNECT with app control
- Smoke detector
- Switch on the entrance door for the ceiling light and awning light
- Switching power supply 350 W
- Fuse box (230 V) with residual current device (safety switch)
- Spotlight(s) (LED/12 V)
- 230 V sockets
- USB-C double socket(s)
- Hot water heating and hot water floor heating (Alde)***

* certain models only ** for 650 SFD

*** for 560 SFDW

For an explanation of the symbols, see page 75

TENDENZA

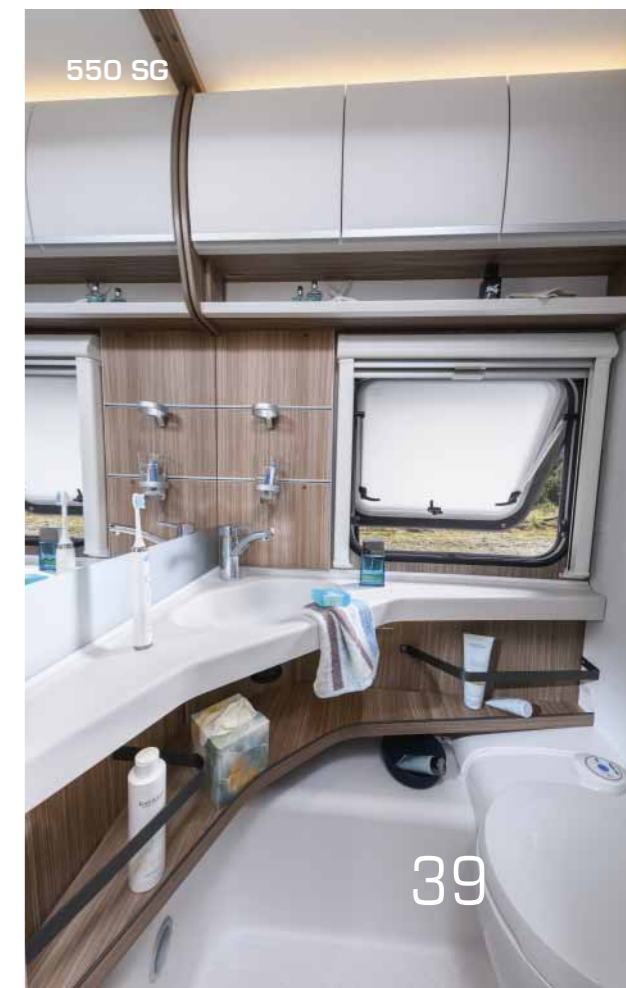
Modern trendsetter on the go



550 SG



560 SFDW



550 SG



465 SFB

Total length cm	703
Total width cm	232
Sleeping spaces	4
Technically permitted total mass kg	1500 ^{g)}
Mass in running order kg ^{c)}	1294



515 SG

Total length cm	751
Total width cm	232
Sleeping spaces	4
Technically permitted total mass kg	1700 ^{g)}
Mass in running order kg ^{c)}	1436



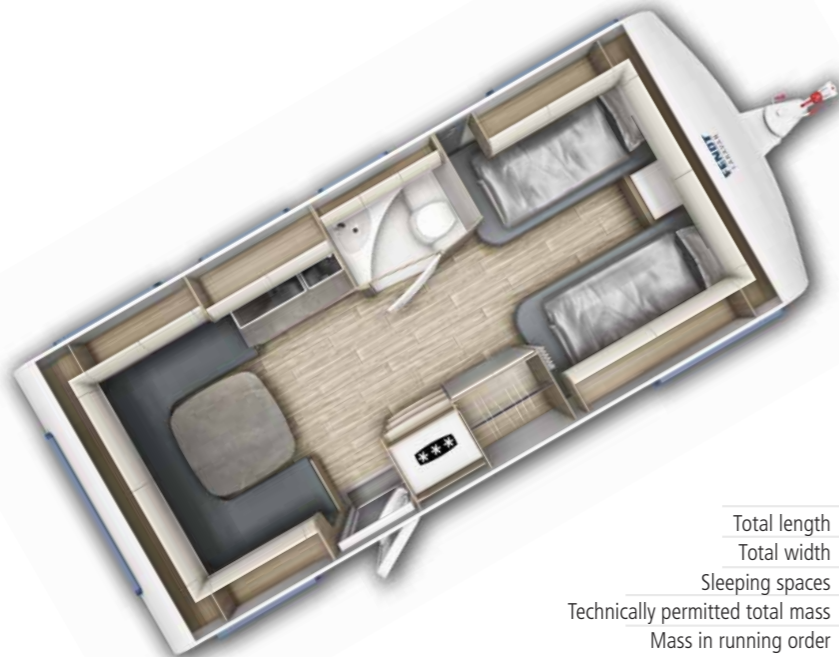
550 SG

Total length cm	772
Total width cm	232
Sleeping spaces	4
Technically permitted total mass kg	1700 ^{g)}
Mass in running order kg ^{c)}	1466



560 SFDW

Total length cm	772
Total width cm	250
Sleeping spaces	4
Technically permitted total mass kg	1800 ^{g)}
Mass in running order kg ^{c)}	1545



560 SG

Total length cm	772
Total width cm	250
Sleeping spaces	4
Technically permitted total mass kg	1800 ^{g)}
Mass in running order kg ^{c)}	1533



650 SFD

Total length cm	855
Total width cm	250
Sleeping spaces	4
Technically permitted total mass kg	2000 ^{g)}
Mass in running order kg ^{c)}	1745



Scan QR code
to watch a film about the Tendenza

Dimensions and weights of all model ranges and models from page 72
Explanation of the symbols on page 75

DIAMANT

Unique in every way



DIAMANT





650 GDW / Avila



560 DW / Genève

DIAMANT

Unique in every way



650 GDW / Avila

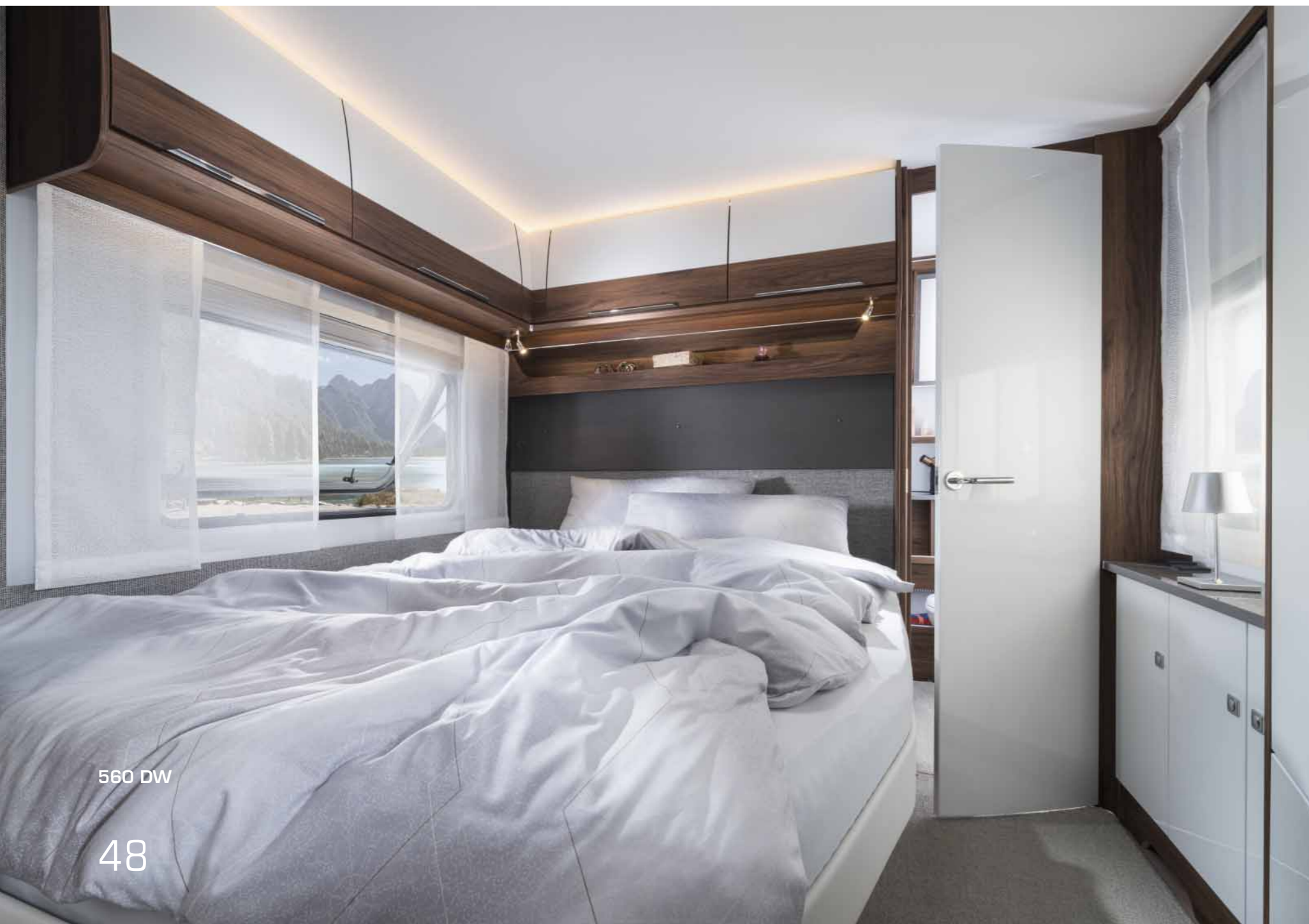
Unique in every way



50 GDW

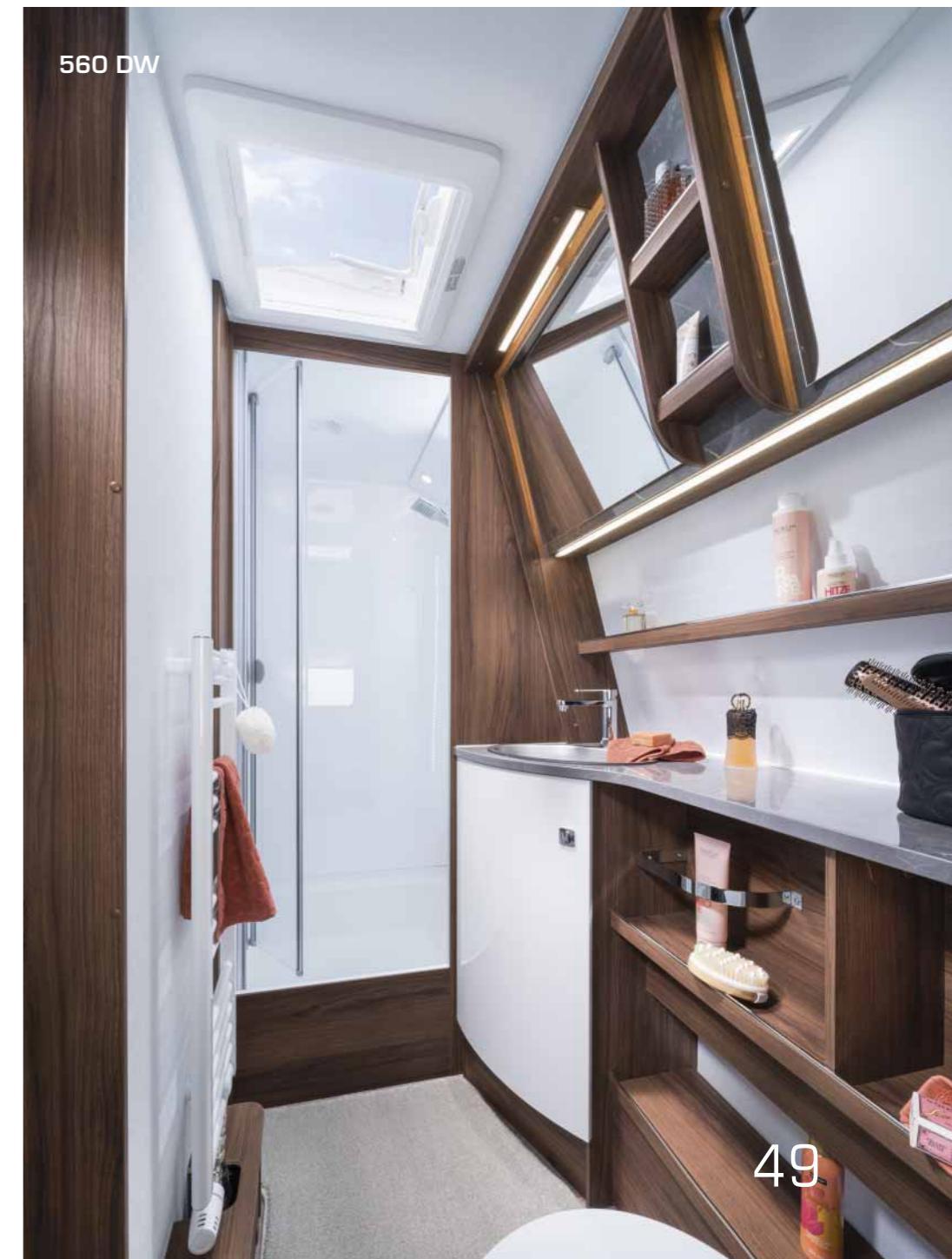


650 GDW



560 DW

48



560 DW

49

DIAMANT

Unique in every way



The Diamant standard equipment

Living room/sleeping area

- Furniture in "Catania Oak" decor
- "Avila" or "Genève" upholstery variants
- Lighting in the wardrobe with motion sensor and charging cable
- LED lighting
- Decorative package (2 cushions/2 placemats)
- Single-leg lifting table in the round seating suite
- Folding sliding door**
- Fly-screen door in the entrance area
- Clothes rack in the sleeping area
- Wooden sliding door*
- Indirect lighting (LED)
- Slatted bed base with fully flexible and permanently elastic bridged joints and hardness adjustment (single and French beds)
- Reading spotlights (12 V) in the round seating suite
- Reading spotlights (12 V) in the sleeping area
- Lift-O-Mat (single and double beds)
- Mattresses: climate-controlled comfort foam (7 zones) (single/double beds)
- MIDI roof hood (Dometic) with crank, forced ventilation, integrated blackout pleated blind and roller fly screen integrated in a Skylight panoramic roof hood
- Skylight panoramic roof hood with lighting (LED)
- Ergonomically shaped back padding
- Seat upholstery with sprung interior in comfort quality
- High-density seat upholstery
- Soft roller blinds with pleated fabric (blackout roller blind from below)
- Ventilated storage compartments with indirect ceiling lighting (LED)
- Storage compartments with soft-close hinges
- Carpet in the door sill with the Fendt-Caravan logo
- Carpeted floor, bound at the edge and loosely laid
- Vinyl flooring, hard-wearing, easy to care for
- Winter backrests

Kitchen/bathroom

- Waste collector integrated into the entrance door
- Workplace lighting (LED)
- Oven with grill (gas)
- Bathroom lighting (LED/12 V)
- Cutlery inserts with a soft-touch surface
- Shower cubicle**
- Towel/clothes hooks and toilet paper holder
- Stove with safety pilot and automatic ignition (3-burner)
- Comfort pleated roller blind on the kitchen window
- Kitchen rear wall cladding with illuminated window cutout

- Compressor refrigerator (154 l when freezer compartment is removed), slim tower, that can be opened from both sides, with interior lighting*
- Compressor refrigerator (200 l when freezer compartment is removed), that can be opened from both sides, with interior lighting**
- Brass mixer tap
- Central washrooms* with large wall units, generous shelves under the sink and an illuminated mirror
- Stainless steel sink with glass cover
- Flush toilet with diode level indicator and holding tank (rollable)
- Storage boxes with fold-up "Free Space" fitting and soft-close
- Washbasin with a sanitary acrylic design* including shelves, bathroom cabinet and lighted mirror
- Washroom window, hinged, made of frosted glass with blackout roller blind and roller fly screen

Water

- Mobile waste water tank (24 L)
- Fresh water (fixed tank 10^{d)}/45^{e)} litres) with external filling
- Fresh water level indicator

Multimedia

- Sky TV bracket with articulated arm
- TV cabling (230 V socket)

Technology / heating / air conditioning

- Fendt-CaravanCONNECT with app control
- Smoke detector
- Switch on the entrance door for the ceiling light and awning light
- Switching power supply 350 W
- Fuse box (230 V) with residual current device (safety switch)
- Spotlight(s) (LED/12 V)
- 230 V sockets
- USB-C double socket(s)
- Hot water heating and hot water floor heating (Alde)

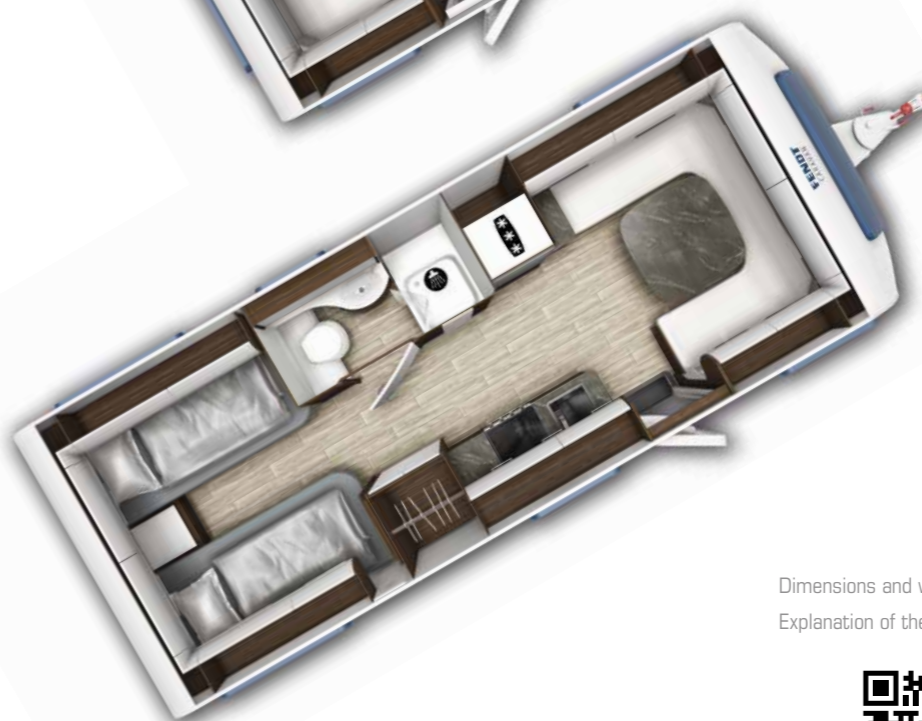
* Certain models only ** for 560 DW and 650 GDW
For an explanation of the symbols, see page 75



560 DW	
Total length cm	771
Total width cm	250
Sleeping spaces	4
Technically permitted total mass kg	1900 / 2000 ^{b) g)}
Mass in running order kg ^{c)}	1670



560 SGW	
Total length cm	771
Total width cm	250
Sleeping spaces	4
Technically permitted total mass kg	1900 / 2000 ^{b) g)}
Mass in running order kg ^{c)}	1664



650 GDW	
Total length cm	860
Total width cm	250
Sleeping spaces	4
Technically permitted total mass kg	2200 ^{g)}
Mass in running order kg ^{c)}	1901

Dimensions and weights of all model ranges and models from page 72
Explanation of the symbols on page 75



Scan QR code to watch a film about the Diamant

EXTERIOR DESIGN

Whether on the street or on the camp site, you can always recognise a Fendt caravan at first glance



EXTERIOR DESIGN

THE FENDT CARAVAN IN 2025 –
on the road in perfect form



The automotive rear of the Apero, Bianco and Tendenza series



The exclusive, flat rear of the Diamant series



The front area of all model ranges is available with and without a front window



Robust trims with door-holding mechanism

Attractive drawbar cover

Bottle case lid can be folded up completely



56



57

The standard equipment in the outdoor area

	APERERO	BIANCO	TENDENZA	DIAMANT
Chassis				
• "White" overrun device cover	•	•	•	•
• Black polished alloy wheels			•	•
• Brake AAA, self-adjusting (AL-KO)	•	•	•	•
• "White" drawbar cover	•	•	•	•
• Euro axle system (AL-KO)	•	•	•	•
• Low-profile tyres	•	•	•	•
• Automatic reversing	•	•	•	•
• Safety coupling AKS 3004 (AL-KO)	•	•	•	•
• Galvanised stable-form corner steadies	•	•	•	
• Galvanised stable-form corner steadies with "Big-Foot" (AL-KO)				•
• Shock absorber	•	•	•	•
• Jockey wheel with load indicator	•	•	•	•
• System lightweight chassis, fully galvanised (AL-KO)	•	•	•	•
• Extended crank supports	•	•	•	•
• Approval for 100 km/h	•	•	•	•
Exterior body				
• Exterior storage flap	•	•	•	•
• Double-glazed, tinted hinged windows that can be operated with one hand and combined fly-screen/blackout roller blind	•	•	•	•
• Brake lights integrated in upper position lights	•	•	•	•
• Entrance door with integrated and insulated access, waste collector, tinted window and blackout pleated blind in the upper area of the entrance door, new look in the Diamant. Bianco Activ 390 FHS shelf instead of waste collector	•	•	•	•
• Bottle crate lid with gas-pressure damper, three-point locking	•	•	•	•
• Fly-screen door in the entrance area			•	•
• Front part partly with LFI technology	•	•	•	•
• Rear part partly with LFI technology			•	•
• Awning rail with lighting on the door side			•	•
• Rear fog lamp(s)	•	•	•	•
• "Skylight" panoramic roof hood with lighting (LED)			•	•
• Wheel housings, fully insulated	•	•	•	•
• Manoeuvring handles, ergonomic and stable, at the front and rear	•	•	•	•
• Reversing lights (2 pieces)	•	•	•	•
• Sandwich construction	•	•	•	•
• Awning light (LED), switched twice	•	•	•	•
• Water tank filler cap with retaining strap	•	•	•	•
• Central locking system	•	•	•	•
• Forced ventilation according to EN standard 1645-1	•	•	•	•

• standard

APERERO • BIANCO • TENDENZA • DIAMANT

The entrance door in the Diamant in a new, modern look and the usual high-quality design



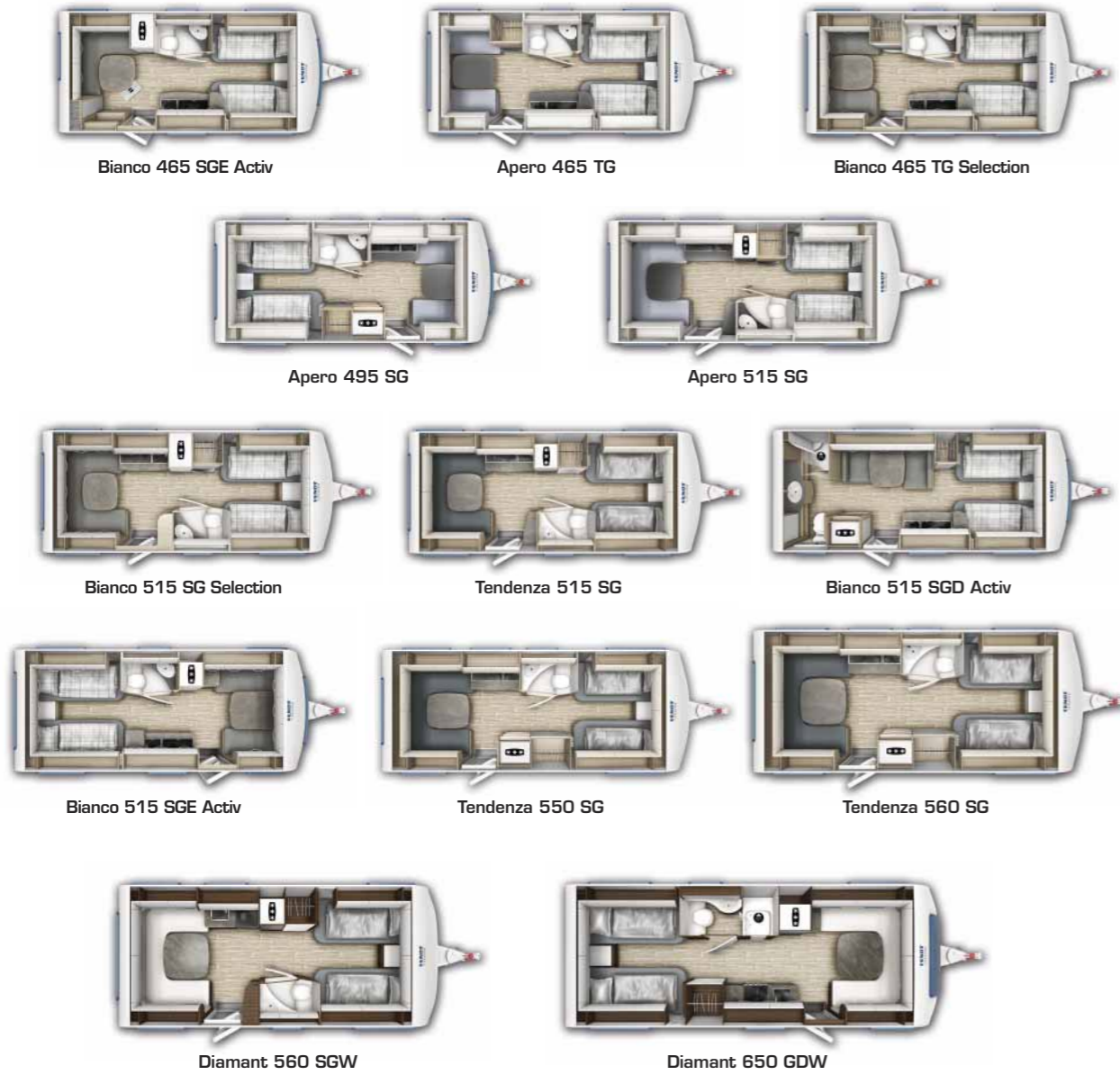
12-year warranty

For the imperviousness of the structural connections

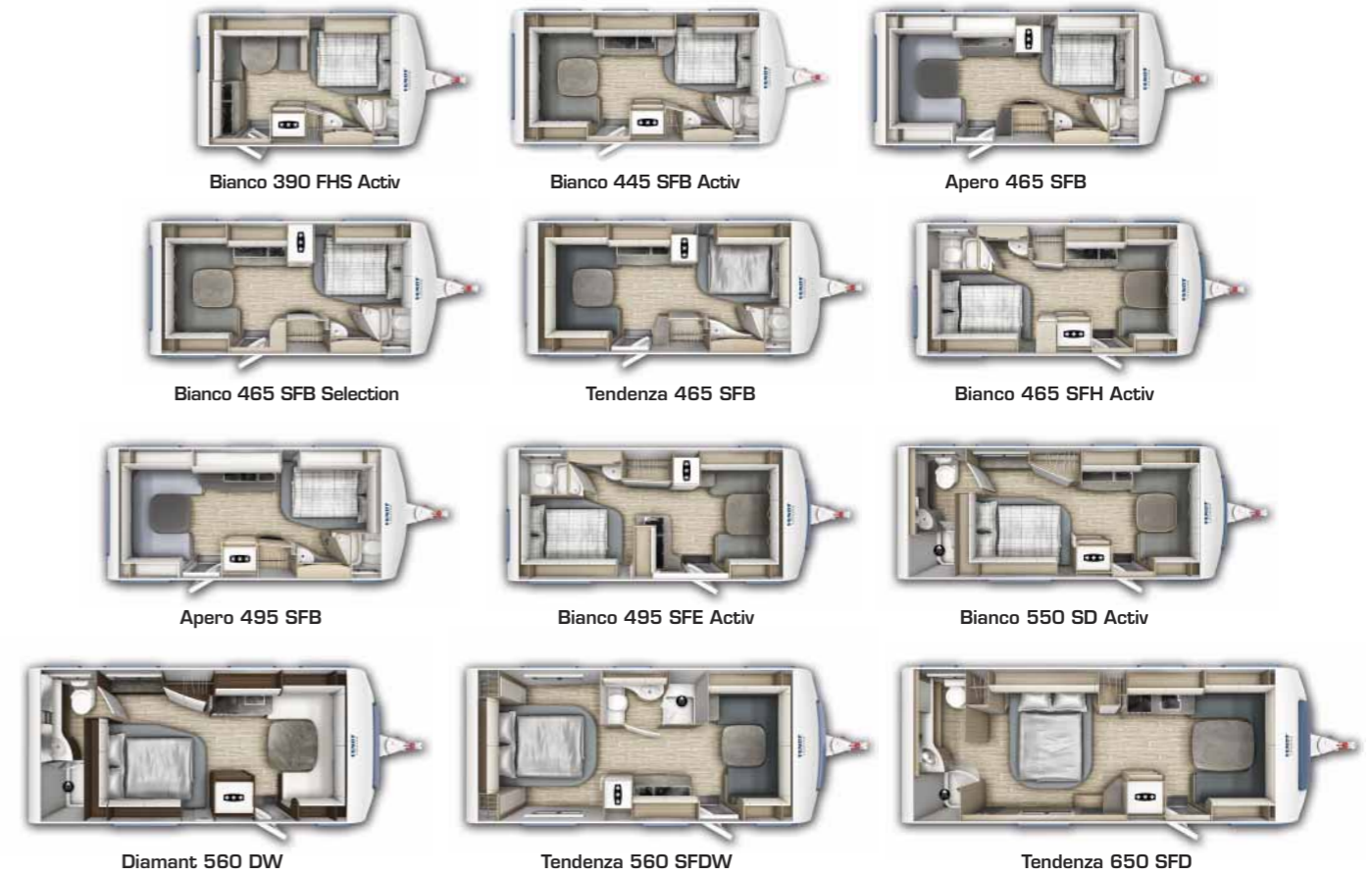
This warranty is only valid in connection with the annual, fee-based inspection carried out at your authorised Fendt Caravan dealer

The variety of beds in Fendt caravan room layouts

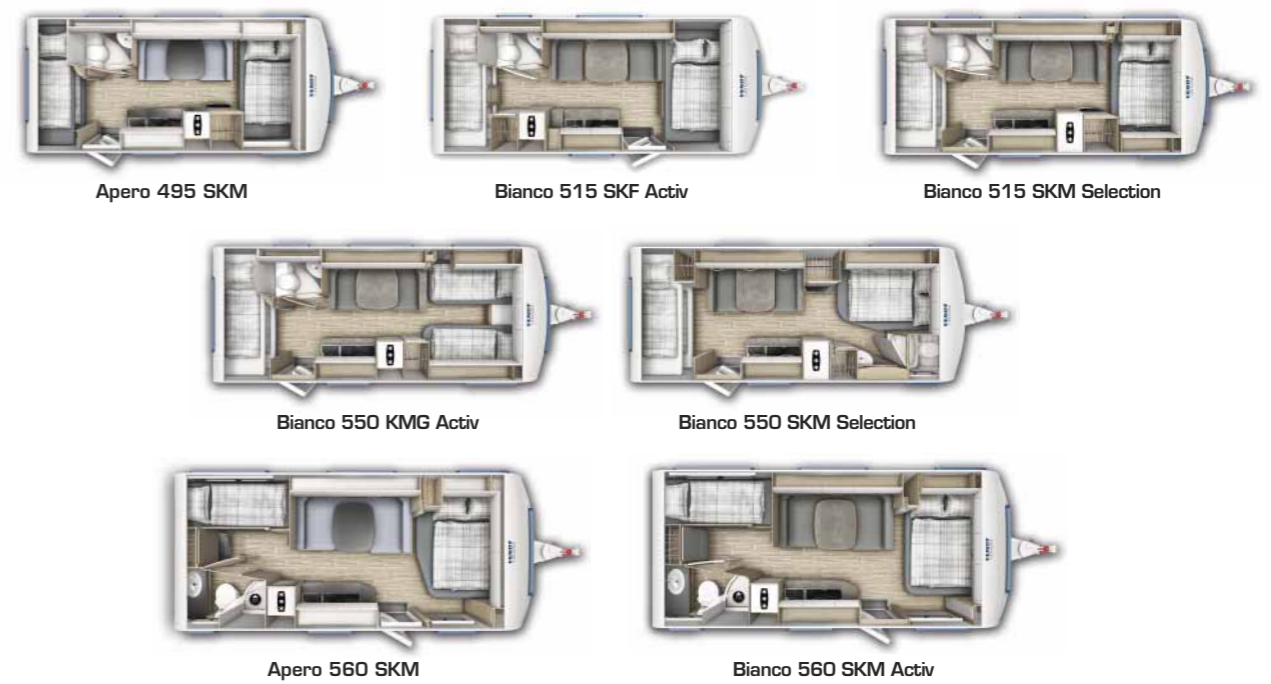
Layouts with single beds



Layouts with French bed



Layouts with children's bed or bunk bed



APER0 • BIANCO • TENDENZA • DIAMANT

MASTER CLASS

QUALITY IS NO COINCIDENCE –
even in the smallest details



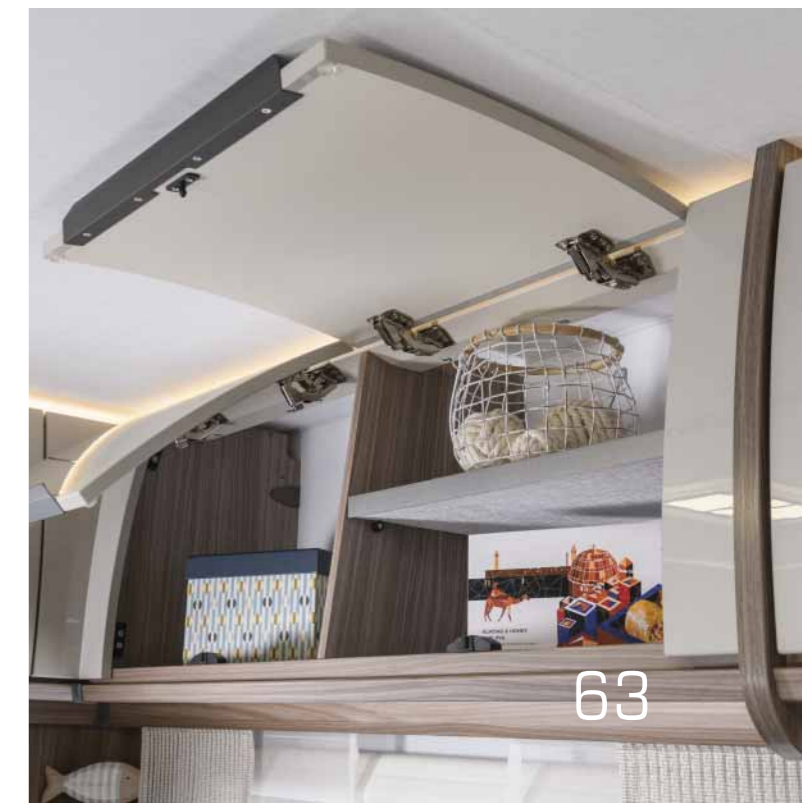
First and foremost, our quality is due to people and materials.

Ever since it began producing mobile homes, Fendt Caravan has attached great importance to a product which is perfect in every respect.

Our well-trained and highly motivated employees ensure that our modern production halls manufacture high-quality mobile homes with a long service life.

From the exterior to the interior design, all the production steps work as a seamless unit. Starting right at the planning stage, our purchasing department sources the best possible materials from long-standing brand suppliers.

That's why our quality sets new standards time and again, consistently satisfying customers who are pursuing their passion for caravanning.



MANY GREAT SOLUTIONS FOR PREMIUM LIVING

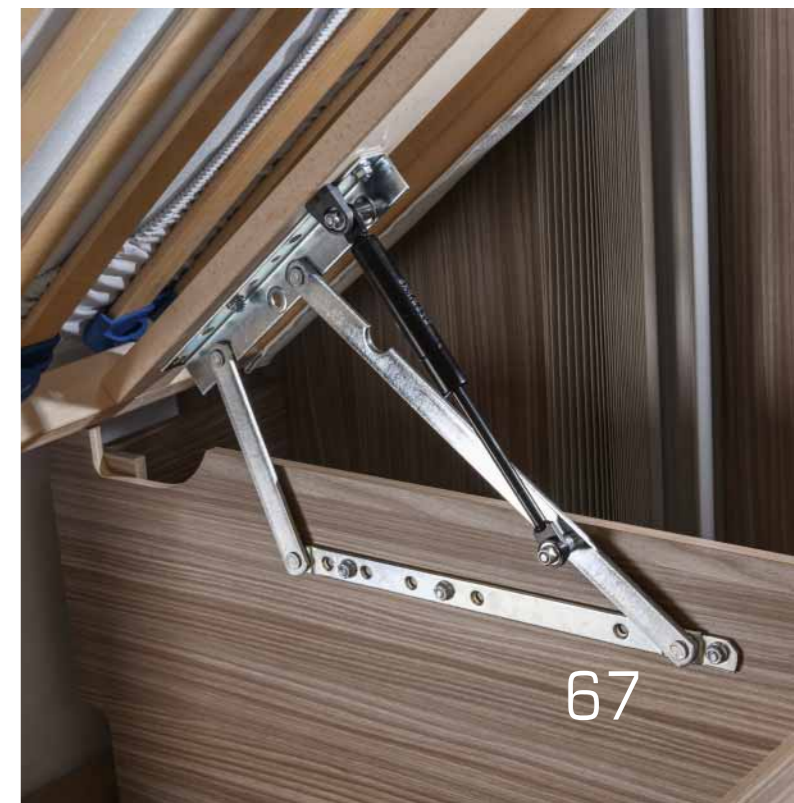
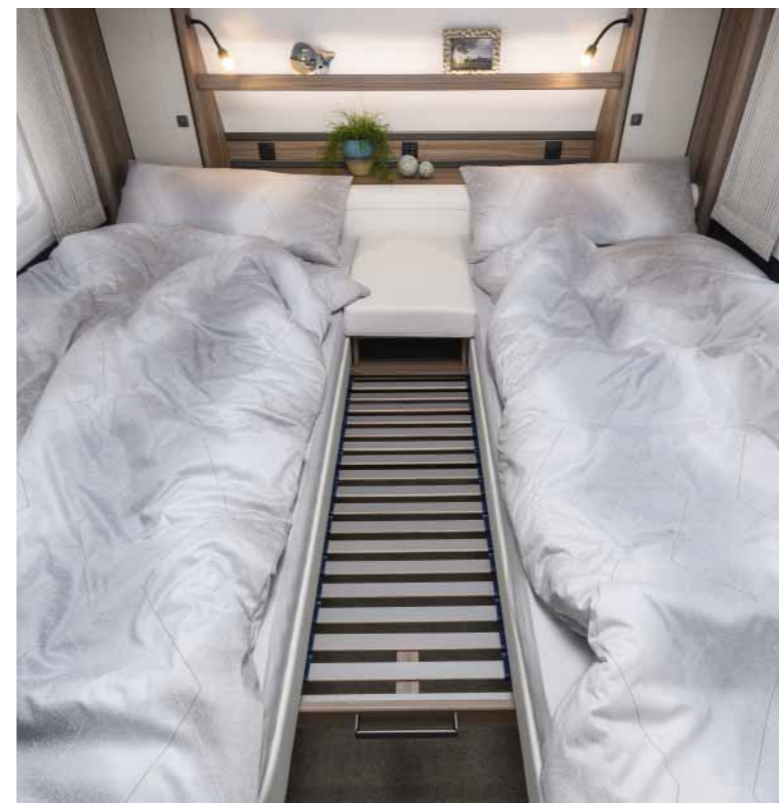
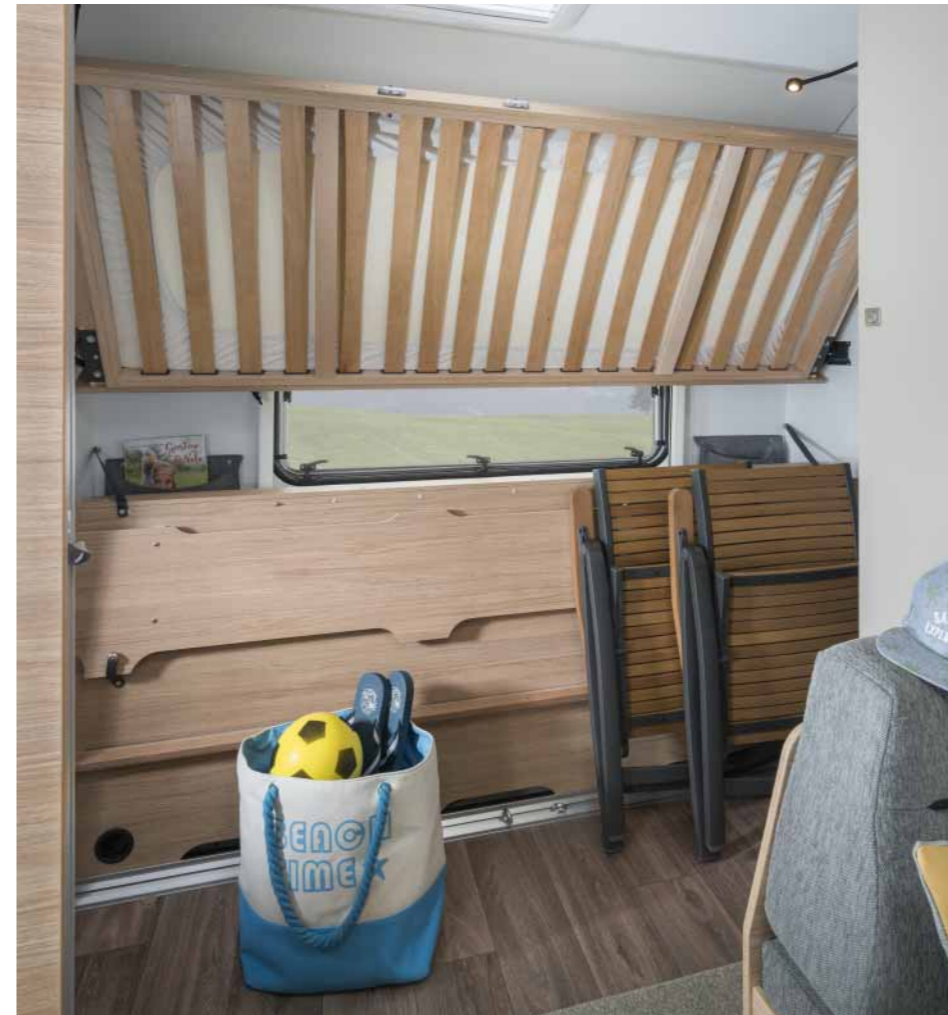


64



65

PRACTICAL CONSTRUCTIONS IN THE SLEEPING AREA



HIGH-QUALITY KITCHENS WITH THE BEST EQUIPMENT



IDEAL BATHROOMS WITH EASY-CARE SURFACES



Layouts and dimensions

APERERO

	465 SFB	465 TG	495 SFB	495 SG	495 SKM	515 SG	560 SKM
Total length cm	703	703	722	722	722	751	772
Body length cm	589	589	607	607	607	637	657
Usable length cm	507	507	526	526	526	556	576
Total width cm	232	232	232	232	232	232	250
max. Height cm	266	266	266	266	266	266	266
Headroom cm	198	198	198	198	198	198	198
Sleeping spaces	4	4	4	4	5	4	5
Bed surface at front cm	140 x 200	2 x 85 x 200	140 x 205	112/116 x 210	140 x 208	1x85x190/1x85x200	160 x 200
Bed surface at rear cm	144/141 x 210	127/115 x 210	157/132 x 210	1x85x190/1x85x200	80 x 210	136/141 x 210	75 x 192
Bed surface in middle cm	-	-	-	-	96 x 179	-	110/117 x 200
Bunk bed surface cm	-	-	-	-	72 x 202	-	75 x 190
Technically permitted total mass kg	1500 ^{g)}	1500 ^{g)}	1600 / 1700 ^{h) g)}	1600 / 1700 ^{h) g)}	1600 / 1700 ^{h) g)}	1600 / 1700 ^{h) g)}	1700 ^{g)}
Dead weight kg ^{b)}	1223	1232	1306	1305	1318	1347	1439
Basic equipment kg ^{a)}	48	48	48	48	48	48	40
Mass in running the road kg ^{e)}	1271	1280	1354	1353	1366	1395	1479
Vehicle load capacity kg ca.	229	220	246 / 346 ^{h)}	247 / 347 ^{h)}	234 / 334 ^{h)}	205 / 305 ^{h)}	221
Floor/roof/wall thickness mm	47 / 39 / 31	47 / 39 / 31	47 / 39 / 31	47 / 39 / 31	47 / 39 / 31	47 / 39 / 31	47 / 39 / 31
Tyres ⁱ⁾	205/65 R 15	205/65 R 15	195/70 R 15 C	195/70 R 15 C	195/70 R 15 C	195/70 R 15 C	195/70 R 15 C
Single/tandem axle	1	1	1	1	1	1	1
Awning circumference cm ^{v)}	962	962	982 ^{p)}	982 ^{p)}	982 ^{p)}	1017 ^{n) r)}	1029 ^{o) s)}

BIANCO SELECTION

	465 SFB Selection	465 TG Selection	515 SG Selection	515 SKM Selection	550 SKM Selection
Total length cm	703	703	751	751	772
Body length cm	589	589	637	637	657
Usable length cm	507	507	556	556	576
Total width cm	232	232	232	232	232
max. Height cm	266	266	266	266	266
Headroom cm	198	198	198	198	198
Sleeping spaces	4	4	4	5	5
Bed surface at front cm	140 x 200	2 x 85 x 200	1x85x190/1x85x200	140 x 208	140 x 200
Bed surface at rear cm	144/142 x 210	125/116 x 210	134/142 x 210	80 x 210	80 x 210
Bed surface in middle cm	-	-	-	96 x 195	100 x 185
Bunk bed surface cm	-	-	-	72 x 202	72 x 202
Technically permitted total mass kg	1500 ^{g)}	1500 ^{g)}	1600 / 1700 ^{h) g)}	1600 / 1700 ^{h) g)}	1700 ^{g)}
Dead weight kg ^{b)}	1251	1237	1377	1378	1392
Basic equipment kg ^{a)}	48	48	48	48	48
Mass in running the road kg ^{e)}	1299	1285	1425	1426	1440
Vehicle load capacity kg ca.	201	215	175 / 275 ^{h)}	174 / 274 ^{h)}	260
Floor/roof/wall thickness mm	47 / 39 / 31	47 / 39 / 31	47 / 39 / 31	47 / 39 / 31	47 / 39 / 31
Tyres ⁱ⁾	205/65 R 15	205/65 R 15	195/70 R 15 C	195/70 R 15 C	195/70 R 15 C
Single/tandem axle	1	1	1	1	1
Awning circumference cm ^{v)}	962	962	1017 ^{n) r)}	1017 ^{n) r)}	1030

BIANCO ACTIV

	390 FHS Activ	445 SFB Activ	465 SFH Activ	465 SGE Activ	495 SFE Activ	515 SGD Activ
Total length cm	603	677	703	703	722	751
Body length cm	488	562	589	589	607	637
Usable length cm	407	481	507	507	526	556
Total width cm	232	232	232	232	232	232
max. Height cm	266	266	266	266	266	266
Headroom cm	198	198	198	198	198	198
Sleeping spaces	3	4	3	2	4	3
Bed surface at front cm	140 x 200	140 x 210	130/118 x 210	2 x 85 x 200	140/128 x 210	1x85x195/1x85x200
Bed surface at rear cm	106/87 x 193	137/133 x 210	140 x 200	-	140 x 200	-
Bed surface in middle cm	-	-	-	-	-	101/87 x 190
Bunk bed surface cm	-	-	-	-	-	-
Technically permitted total mass kg	1500 ^{g)}	1500 ^{g)}	1600 / 1700 ^{h) g)}	1600 / 1700 ^{h) g)}	1700 ^{g)}	1700 ^{g)}
Dead weight kg ^{b)}	1113	1238	1302	1299	1320	1374
Basic equipment kg ^{a)}	53	53	53	53	48	45
Mass in running the road kg ^{e)}	1166	1291	1355	1352	1368	1419
Vehicle load capacity kg ca.	334	209	245 / 345 ^{h)}	248 / 348 ^{h)}	332	281
Floor/roof/wall thickness mm	47 / 39 / 31	47 / 39 / 31	47 / 39 / 31	47 / 39 / 31	47 / 39 / 31	47 / 39 / 31
Tyres ⁱ⁾	205/65 R 15	205/65 R 15	195/75 R 15 C	195/70 R 15 C	195/70 R 15 C	195/70 R 15 C
Single/tandem axle	1	1	1	1	1	1
Awning circumference cm ^{v)}	864	934	969	969	982 ^{p)}	1017 ^{n) r)}

BIANCO ACTIV

	515 SGE Activ	515 SKF Activ	550 KMG Activ	550 SD Activ	560 SKM Activ
Total length cm	751	751	772	772	772
Body length cm	637	637	657	657	657
Usable length cm	556	556	576	576	576
Total width cm	232	232	232	232	250
max. Height cm	266	266	266	266	266
Headroom cm	198	198	198	198	198
Sleeping spaces	4	5	5	4	5
Bed surface at front cm	140/121 x 210	140 x 210	1x85x190/1x85x200	140/121 x 210	140 x 200
Bed surface at rear cm	2 x 85 x 200	80 x 210	80 x 210	140 x 200	75 x 192
Bed surface in middle cm	-	96 x 210	96 x 179	-	110/117 x 200
Bunk bed surface cm	-	72 x 202	72 x 202	-	75 x 190
Technically permitted total mass kg	1700 ^{g)}	1700 ^{g)}	1700 ^{g)}	1700 ^{g)}	1700 ^{g)}
Dead weight kg ^{b)}	1368	1400	1428	1407	1478
Basic equipment kg ^{a)}	53	53	53	45	45
Mass in running the road kg ^{e)}	1421	1453	1481	1452	1523
Vehicle load capacity kg ca.	279	247	219	248	177
Floor/roof/wall thickness mm	47 / 39 / 31	47 / 39 / 31	47 / 39 / 31	47 / 39 / 31	47 / 39 / 31
Tyres ⁱ⁾	195/70 R 15 C	195/70 R 15 C	195/70 R 15 C	195/70 R 15 C	195/70 R 15 C
Single/tandem axle	1	1	1	1	1
Awning circumference cm ^{v)}	1017 ^{n) r)}	1017 ^{n) r)}	1030	1030	1029 ^{o) s)}

Layouts and dimensions

TENDENZA

	465 SFB	515 SG	550 SG	560 SFDW	560 SG	650 SFD
Total length cm	703	751	772	772	772	855
Body length cm	589	637	657	657	657	741
Usable length cm	507	556	576	576	576	659
Total width cm	232	232	232	250	250	250
max. Height cm	266	266	266	266	266	265
Headroom cm	198	198	198	198	198	198
Sleeping spaces	4	4	4	4	4	4
Bed surface at front cm	140 x 200	1x85x190/1x85x200	1x85x210/1x85x200	142/121 x 224	1x90x210/1x90x200	162/151 x 230
Bed surface at rear cm	144/142 x 210	137/142 x 210	152/142 x 210	150 x 190	152/142 x 230	-
Bed surface in middle cm	-	-	-	-	-	190 x 150
Bunk bed surface cm	-	-	-	-	-	-
Technically permitted total mass kg	1500 ^{a)}	1700 ^{a)}	1700 ^{a)}	1800 ^{a)}	1800 ^{a)}	2000 ^{a)}
Dead weight kg ^{b)}	1241	1383	1413	1492	1480	1700
Basic equipment kg ^{a)}	53	53	53	53	53	45
Mass in running the road kg ^{c)}	1294	1436	1466	1545	1533	1745
Vehicle load capacity kg ^{ca)}	206	264	234	255	267	255
Floor/roof/wall thickness mm	47 / 39 / 31	47 / 39 / 31	47 / 39 / 31	47 / 39 / 31	47 / 39 / 31	47 / 39 / 31
Tyres ⁱ⁾	205/65 R 15	195/70 R 15 C	195/70 R 15 C	205/70 R 15 C	205/70 R 15 C	185/65 R 14
Single/tandem axle	1	1	1	1	1	2
Awning circumference cm ^{v)}	962	1017 ^{n) i)}	1030 ^{s)}	1034 ^{s)}	1034 ^{s)}	1119 ^{u) i)}

DIAMANT

	560 DW	560 SGW	650 GDW
Total length cm	771	771	860
Body length cm	656	656	746
Usable length cm	563	563	654
Total width cm	250	250	250
max. Height cm	266	266	265
Headroom cm	198	198	198
Sleeping spaces	4	4	4
Bed surface at front cm	144/116 x 224	2 x 90 x 200	182/156 x 224
Bed surface at rear cm	155 x 195	142/144 x 224	2 x 90 x 205
Bed surface in middle cm	-	-	-
Bunk bed surface cm	-	-	-
Technically permitted total mass kg	1900 / 2000 ^{h) a)}	1900 / 2000 ^{h) a)}	2200 ^{a)}
Dead weight kg ^{b)}	1625	1611	1848
Basic equipment kg ^{a)}	45	53	53
Mass in running the road kg ^{c)}	1670	1664	1901
Vehicle load capacity kg ^{ca)}	230 / 330 ^{h)}	236 / 336 ^{h)}	299
Floor/roof/wall thickness mm	47 / 39 / 31	47 / 39 / 31	47 / 39 / 31
Tyres ⁱ⁾	215/70 R 15 C	215/70 R 15 C	195/65 R 15
Single/tandem axle	1	1	2
Awning circumference cm ^{v)}	1027	1027	1116 ^{v)}

Legend:

- 100% filled aluminium gas cylinder (11 kg), fresh water tank with 10-litre "when-driving" fill level, 100% filled toilet flushing tank, 100% filled water heater
- The dead weight reflects the vehicle weight with standard fittings without water, gas or other accessories
- The mass in running order was determined according to Regulation (EU) No 1230/2012, taking into account the "when-driving" fill level of the fresh water tank, the 100% filled toilet flushing tank, the 100% filled water heater, and a 100% filled aluminium gas cylinder (11 kg)
- Fresh water tank capacity within the meaning of Annex V, part A, no.2.6 fn (h) of Regulation (EU) 1230/2012, taking into account the movement limitation (discharge nozzle on the fresh water tank) 10 l ("when driving" fill level)
- Capacity of the fresh water tank max. 25 litres or 45 litres, taking into account the discharge nozzle on the fresh water tank
- Additional weight variants are possible by installing a new chassis – your Fendt Caravan dealer will be happy to provide you with information
- Increased load capacity
- Alternative tyre sizes are permitted to the manufacturer
- For weight variant 1800 kg: awning circumference 1015 cm
- For weight variant 1800 kg: awning circumference 1034 cm
- For weight variant 1900/2000 kg: awning circumference 987 cm
- For weight variant 1900/2000 kg: awning circumference 1019 cm
- For weight variant 1900/2000 kg: awning circumference 1039 cm
- For weight variant 2800 kg: awning circumference 1124 cm
- For weight variant 2200/2400/2500 kg: awning circumference 1126 cm
- For weight variant 2800 kg: awning circumference 1114 cm

Important information:

The catalogue and the price list reflect the status of the series at the time of printing. Despite the contents having been checked, printing errors cannot be ruled out. Over the course of the model year, we reserve the right to make changes to the equipment and fittings and product improvements. Differences in colour due to printing and photography cannot be completely ruled out.

The models depicted in the catalogue and in the price list sometimes contain special fittings or decorations that are not part of the standard scope of delivery. Where weights are specified, deviations of up to +/- 5 percent are possible due to the processing of natural materials. When accessories are installed, the mass in running order is increased.

Attachments to the vehicle may influence the drawbar load. All dimensions are non-binding and may be subject to minor changes.

Information on masses and weights is given in accordance with Regulation (EU) 1230/2012, unless otherwise specified in the catalogue, including technical specifications and price list.

Caution: Axle and drawbar loads must be observed, and the technically permissible overall mass be adhered to. Adherence to the permissible masses and loads is to be ensured by distributing the load throughout the vehicle. Fittings and equipment may influence the payload or vehicle load capacity by increasing/decreasing the dead weight. It should be noted that this can reduce the vehicle load capacity, depending on the fittings and equipment. The vehicle load capacity corresponds to the difference between the technically permissible total mass and the mass in running order. This value must take into account the masses for special accessories and personal equipment.

The technically permissible total mass in the loaded state must never be exceeded. Please ask your Fendt Caravan dealer if necessary.

The specification of this circumference may not be sufficient to select the appropriate awning, under certain circumstances.

The specified circumference only applies to awnings that are fully drawn into the existing keder strip of the caravan.

The circumference may vary due to special equipment, tire size and load.

We recommend measuring the caravan individually in each case in order to determine an exact circumference appropriate for the type of awning.

We reserve the right to make changes to prices, constructional details and fittings.



+++ 12-year warranty on the imperviousness of the body connections: this warranty is only valid in connection with the annual, fee-based inspection carried out at your authorised Fendt Caravan dealer +++ Certified to ISO 9001:2015 +++ Environmental management certification according to ISO 14001:2015 + ++ Metallic paintwork +++ 47 mm floor thickness for optimal insulation values +++ Drain cocks for convenient emptying of the water pipes +++ Solid, screwed connections +++ Two-part sidewall panel +++ Sturdy furniture made of multi-glued plywood +++ Extra robust hinges, positioners and locks +++ 2-pole residual current device/safety switch with 30mA



FENDT
CARAVAN

2025

www.fendt-caravan.com (Find us on Facebook, Instagram, YouTube)

Fendt-Caravan GmbH • Postfach 1135 • D-86689 Mertingen
Tel. +49 (0) 90 78 / 96 88 - 0 • Fax +49 (0) 90 78 / 96 88 - 406